

**FOR LEASE**

**FEATURES:**

- A 91,680 Square Foot Multi-Tenant Industrial Park
- Desirable Sorrento Valley Location
- Close to UCSD, Torrey Pines & Del Mar Heights
- Excellent access to I-805, I-5, UTC & Mira Mesa Blvd
- Abundant Parking
- No CAM or NNN Charges
- Expansion opportunities within the project
- U.S. Postal Office one block away
- On Site Deli
- Quite and Professional Working Environment



**ENVIRONMENTAL PLAZA**

4174 – 4206 Sorrento Valley Blvd. San Diego, CA 92121

1,767 SF SUITE AVAILABLE  
**FOR LEASE**

# ENVIRONMENTAL PLAZA

4174 – 4206 Sorrento Valley Blvd. San Diego, CA 92121

➤ **4182 Suites L & M1**  
1,767 Total S.F. @ \$1.25/S.F. + Electrical

ENVIRONMENTAL PLAZA  
4174 through 4206 Sorrento Valley Boulevard

CREEK

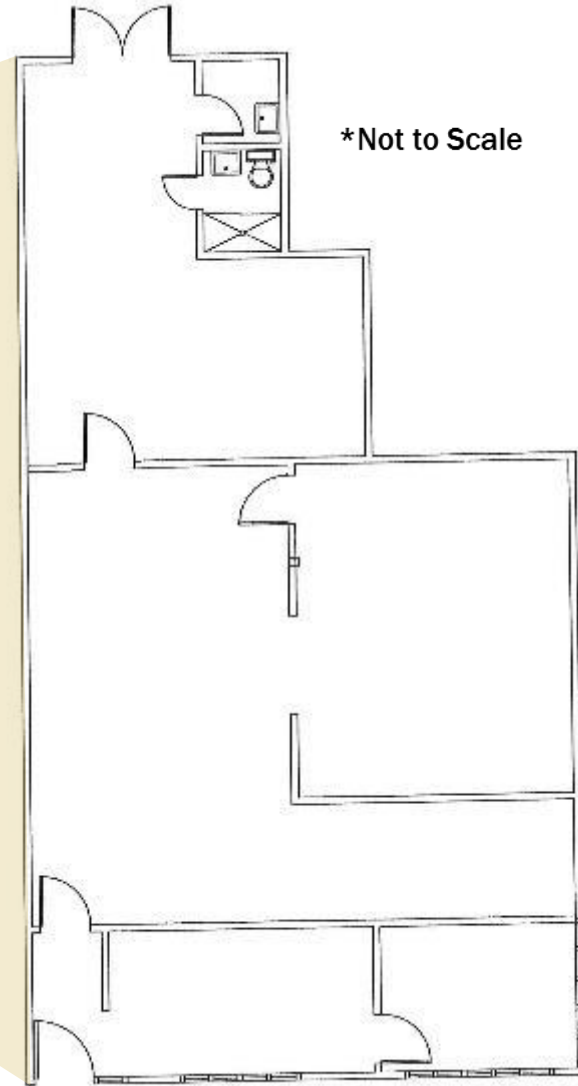
Sorrento Valley Boulevard

SITE  
PLAN



Legal Description:  
Parcel "A" as shown  
on Parcel Map No. 1205

\*Not to Scale

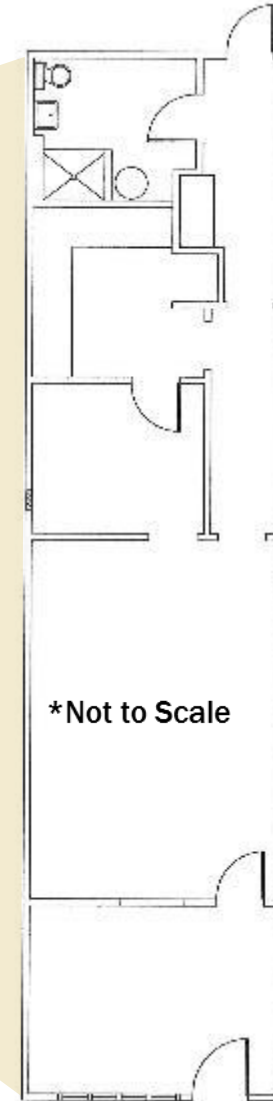
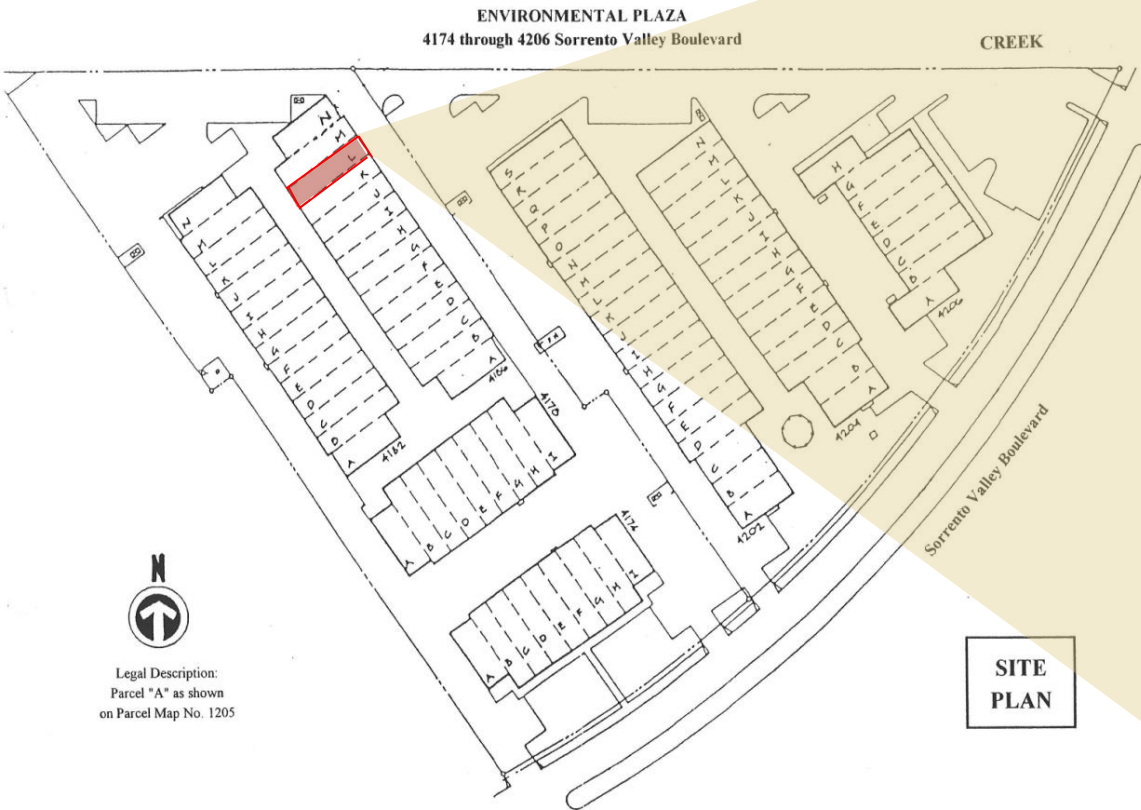


1,072 SF SUITE AVAILABLE  
**FOR LEASE**

# ENVIRONMENTAL PLAZA

4174 – 4206 Sorrento Valley Blvd. San Diego, CA 92121

➤ **4186 Suite L**  
1,072 Total S.F. @ \$1.25/S.F. + Electrical

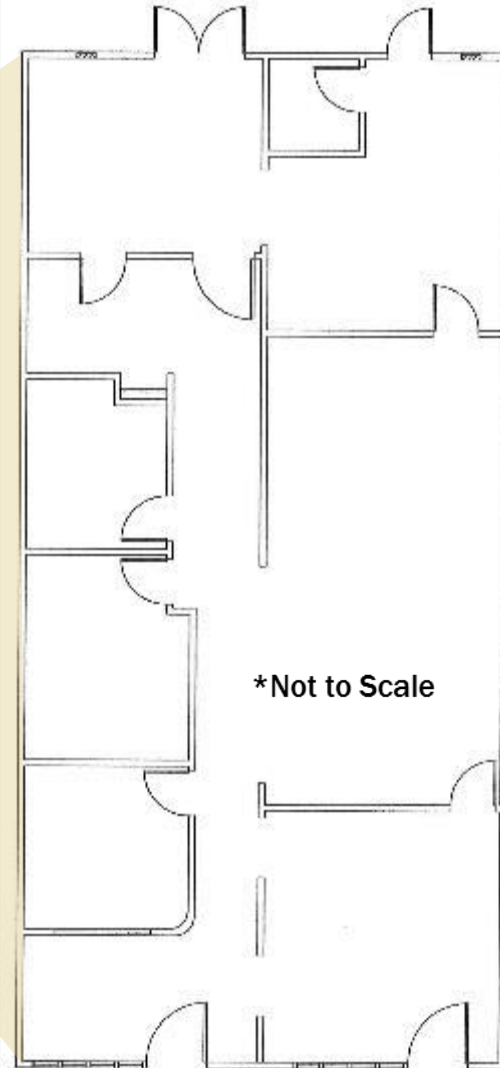
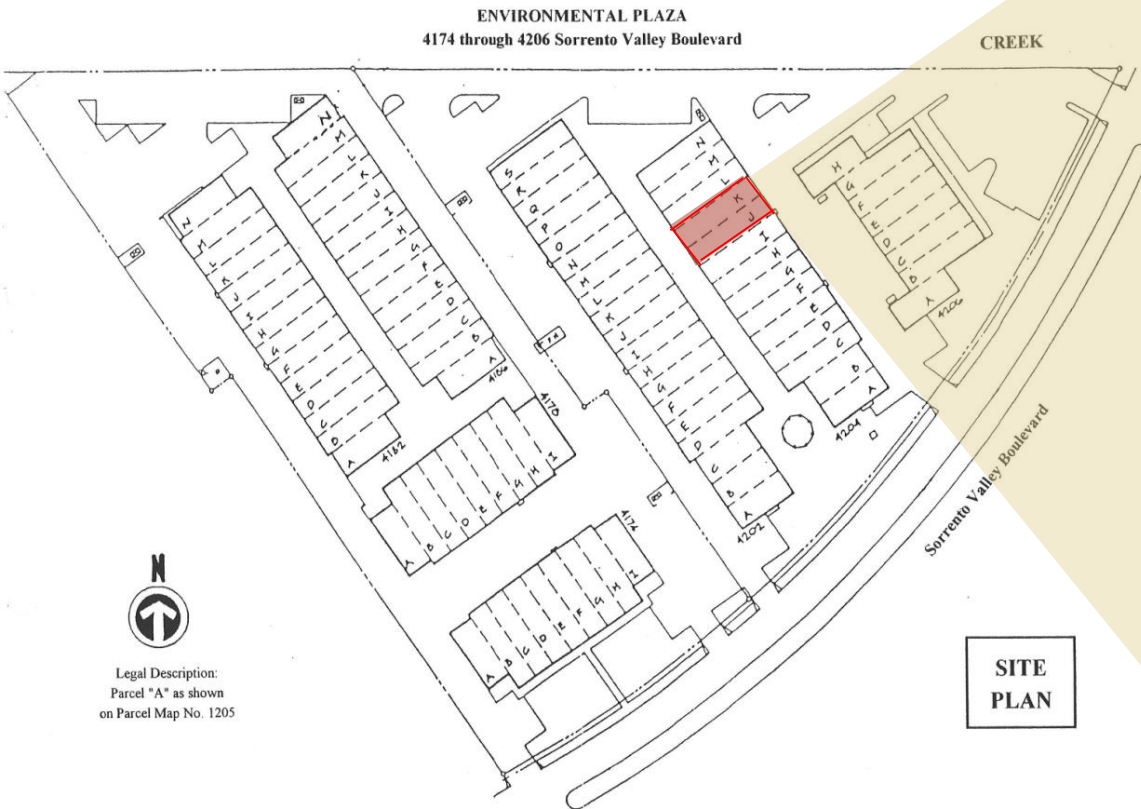


2,144 SF SUITE AVAILABLE  
**FOR LEASE**

# ENVIRONMENTAL PLAZA

4174 – 4206 Sorrento Valley Blvd. San Diego, CA 92121

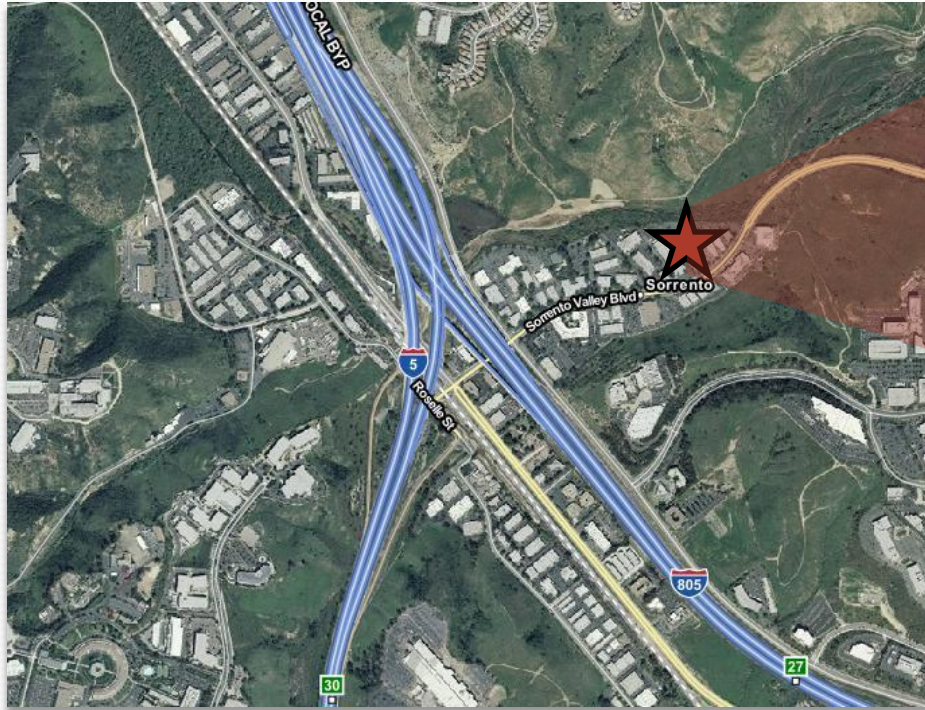
➤ **4204 Suites J & K**  
2,144 Total S.F. @ \$1.25/S.F. + Electrical



# FOR LEASE

# ENVIRONMENTAL PLAZA

4174 – 4206 Sorrento Valley Blvd. San Diego, CA 92121



## SORRENTO VALLEY AREA MAP

