

11107 ROSELLE STREET

◆ SAN DIEGO, CALIFORNIA 92121 ◆



11107 ROSELLE STREET

◆ SAN DIEGO, CALIFORNIA 92121 ◆

PROPERTY FEATURES

- ◆ Easy access to I-5 and I-805
- ◆ Small lab suites available
- ◆ Renovated common areas
- ◆ Ample parking
- ◆ Shared walk-in cooler

AVAILABILITY

SUITE NO.	SQ. FT.
201-205	±3,395 SF
221-223	±1,832 SF



11107 ROSELLE STREET

◆ SAN DIEGO, CALIFORNIA 92121 ◆



AVAILABILITY

SUITE NUMBER

201-205

SQUARE FEET

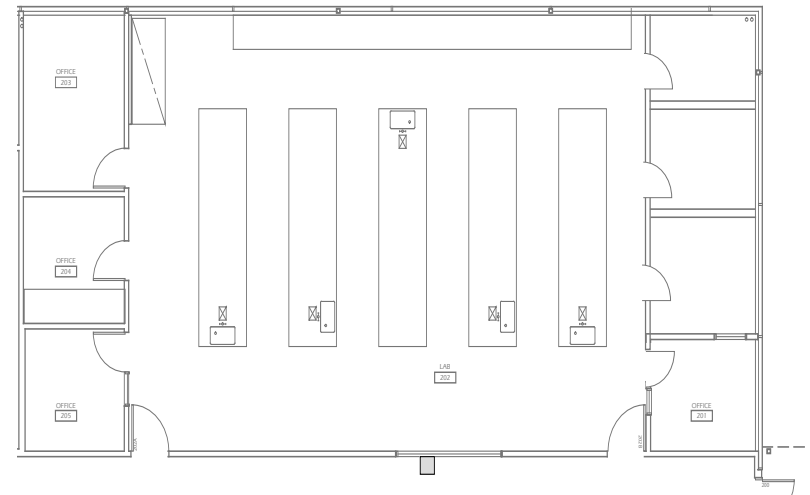
±3,395 SF

RATE

\$3.50 NNN PSF / Monthly
(NNN's estimated at \$0.82 PSF)

AVAILABILITY DATE

April 1, 2021



11107 ROSELLE STREET

◆ SAN DIEGO, CALIFORNIA 92121 ◆



AVAILABILITY

SUITE NUMBER

221-223

SQUARE FEET

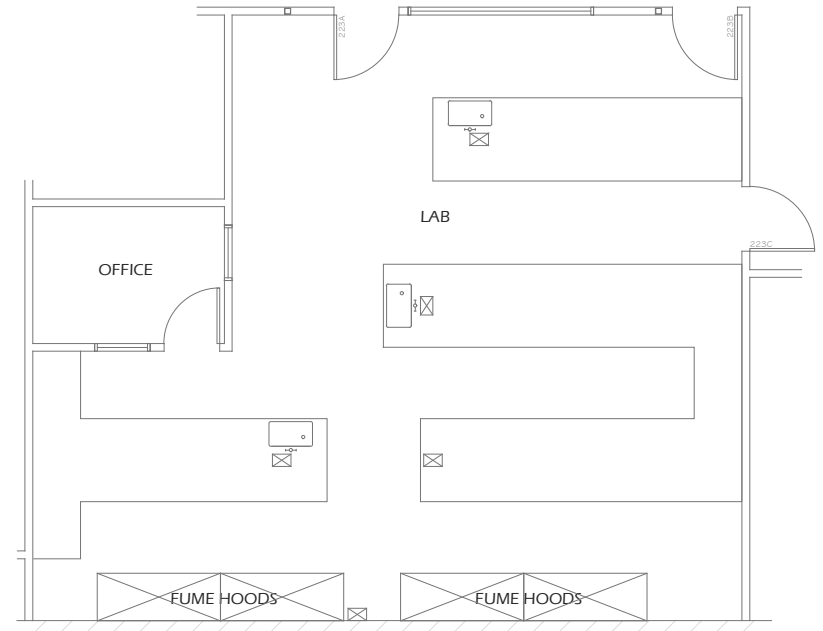
±1,832 SF

RATE

\$3.50 NNN PSF / Monthly
(NNN's estimated at \$0.82 PSF)

AVAILABILITY DATE

Now



11107 ROSELLE STREET

◆ SAN DIEGO, CALIFORNIA 92121 ◆

