

FOR LEASE

New Spec Lab

Delivering May 2023

11010
ROSELLE
STREET
SAN DIEGO
CALIFORNIA



NEXT-GEN LIFE SCIENCE SPACE

11010 ROSELLE STREET SAN DIEGO, CA 92121

FEATURES

- Restrooms with showers
- Immediate access to I-5 & I-805
- Walkable to Coaster & area restaurants





RENTAL RATE: NEGOTIABLE

+/- 15,500 SF



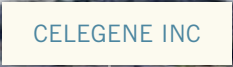
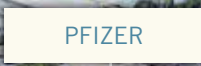
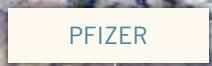
NEARBY AMENITIES

Located in the heart of Sorrento Mesa and situated among many of San Diego's most prestigious life science, medical device, and technology companies. Enjoy quick freeway access and nearby retail offerings coupled with close proximity to the renowned UCSD campus.



11010 ROSELLE STREET
SAN DIEGO, CA 92121



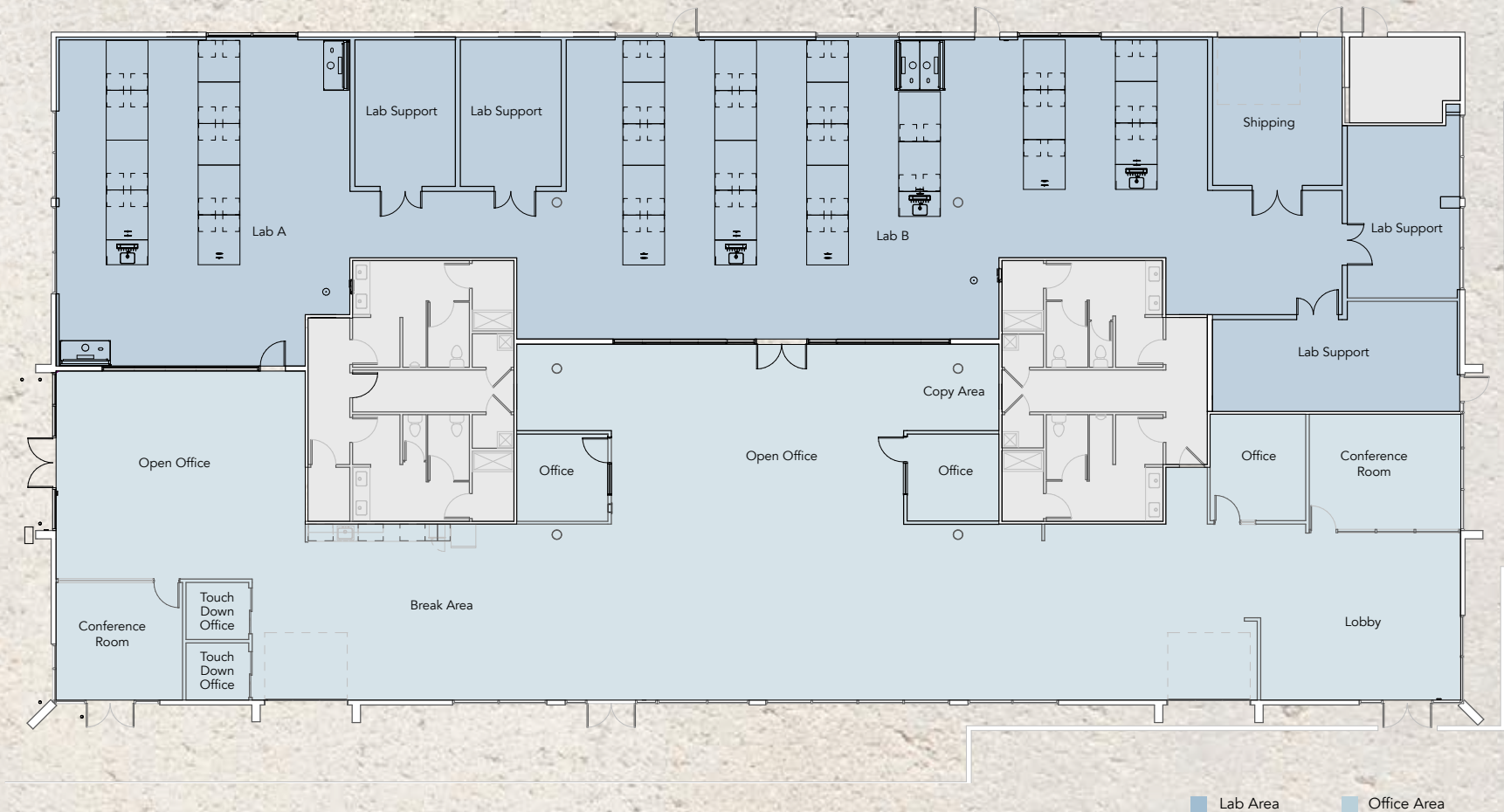




FLOOR PLAN

11010 ROSELLE STREET
SAN DIEGO, CA

+/- 15,500 SF



FLOOR PLAN

