

9810 SUMMERS RIDGE ROAD SUITE 100-120

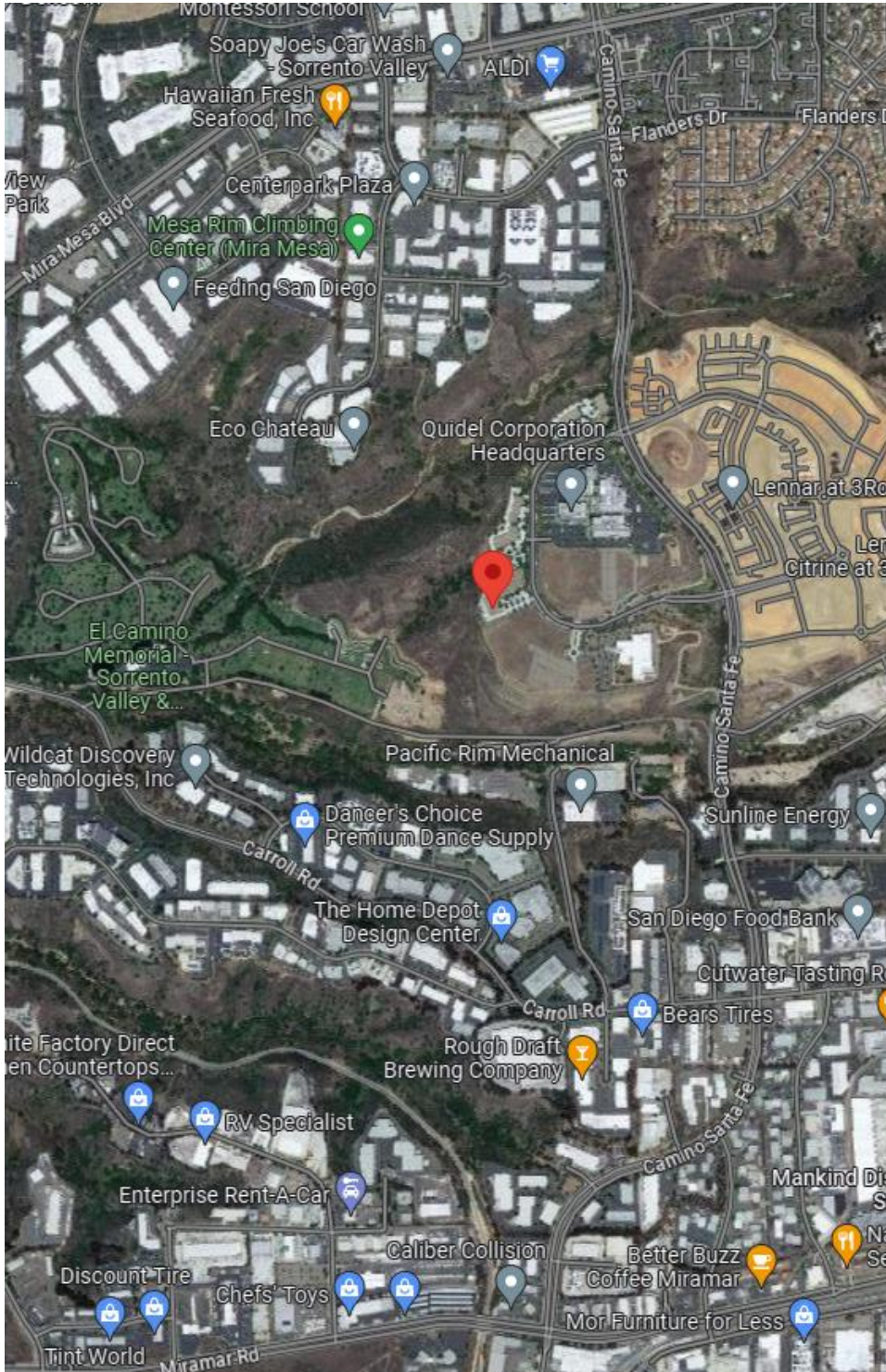
San Diego, CA 92121



FLEX SUBLEASE

4,544 RSF

BUILDING INFORMATION



ADDRESS

9810 Summers Ridge Road,
Suite 100-120
San Diego, CA 92121

AVAILABLE

Now

ASKING RATE

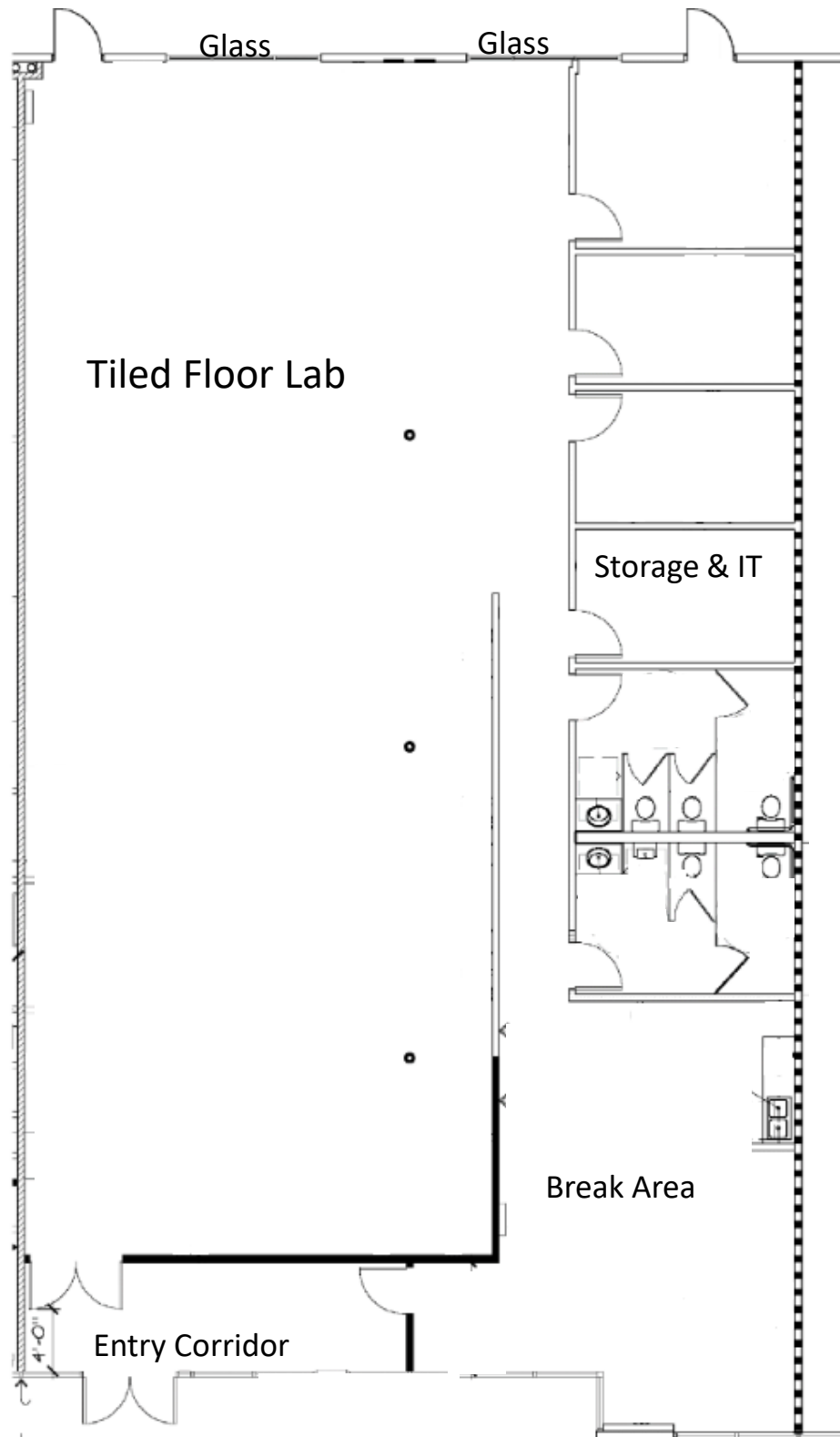
\$2.75/SF NNN

MASTER LEASE EXPIRATION

October 31, 2026

- 1 sink with cabinets and emergency shower

FLOOR PLAN



9810 SUMMERS RIDGE ROAD, SUITE 100-120



9810 SUMMERS RIDGE ROAD, SUITE 100-120

